

An aerial photograph of a modern urban waterfront area at sunset. The sky is a mix of orange, yellow, and blue. In the center is a tall, cylindrical building with a unique facade of white, overlapping, wave-like balconies. To its left is a tall, dark, angular skyscraper. To its right is another tall building with a glass facade reflecting the sunset. In the foreground, there's a waterfront promenade with a paved walkway, some greenery, and a few people. A body of water is visible in the bottom left, with a dock and two boats: a green and white boat and a red and white boat. The text 'THE PROMENADE DOCKLANDS' is overlaid in white, sans-serif font across the middle of the image.

THE PROMENADE

DOCKLANDS

WATERFRONT BAR AND
ROOM





WATERFRONT BAR & ROOM

THE PROMENADE DOCKLANDS

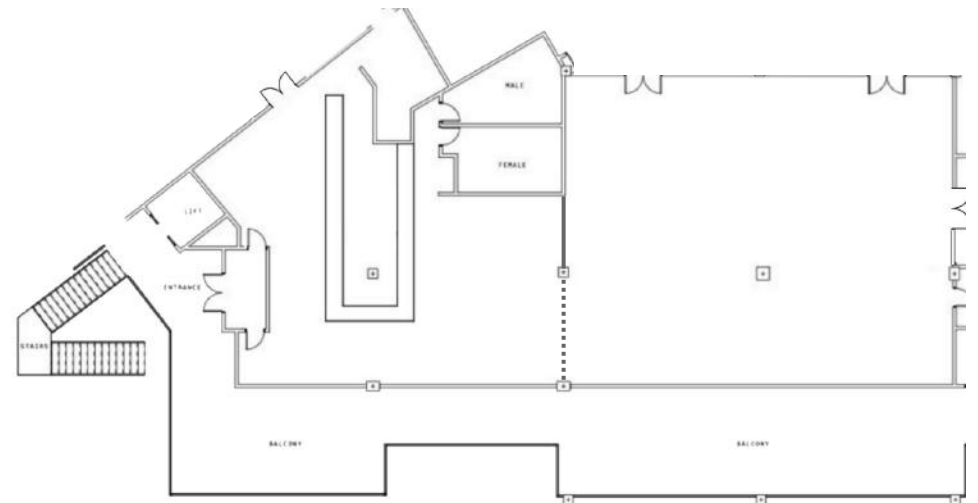
Flowing effortlessly from the Waterfront Bar, a curtain wall provides a dramatic room reveal to the Waterfront Room, a space designed to transition your guests from the social buzz of a cocktail hour to the distinguished ambiance of a seated reception.

Waterfront Room & Bar = 390sqm

Waterfront Balcony = 186sqm

Total = 576sqm

Standing Cocktail: up to 650 guests





OUR MISSION

Our mission is to provide a world-class education that prepares our students for the challenges of the future. We are committed to excellence in teaching, research, and student support, ensuring that every student has the opportunity to succeed.

OUR MISSION

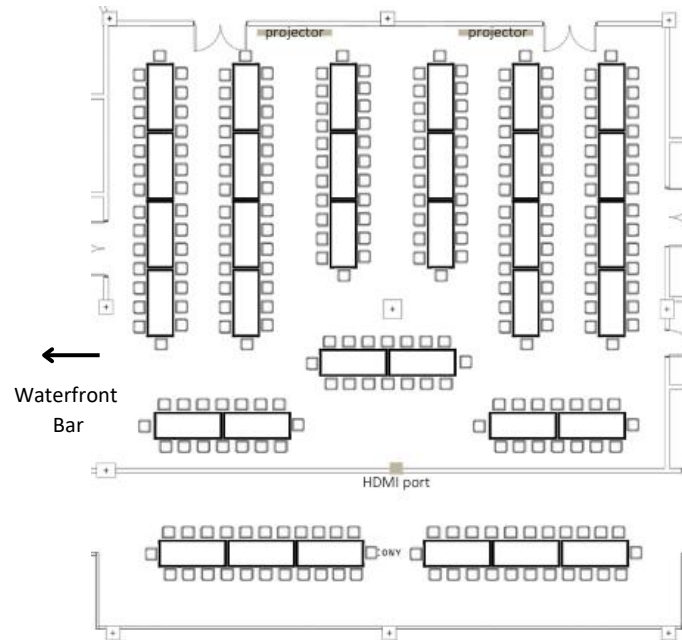
MELBOURNE

Our focus is on providing a world-class education that prepares our students for the challenges of the future. We are committed to excellence in teaching, research, and student support, ensuring that every student has the opportunity to succeed.



WATERFRONT ROOM

THE PROMENADE
DOCKLANDS



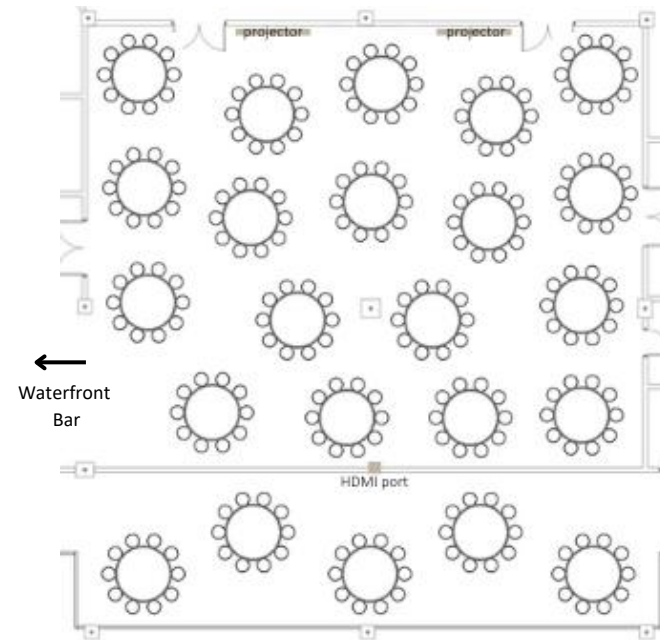
LONG TABLES

Indoors: 9 various sized tables | 216 pax

Balcony: 2 tables | 48 pax

Guests per table

Small: 16 | Medium: 24 | Large: 30



ROUND TABLES

Indoors: 18 tables | 216 pax

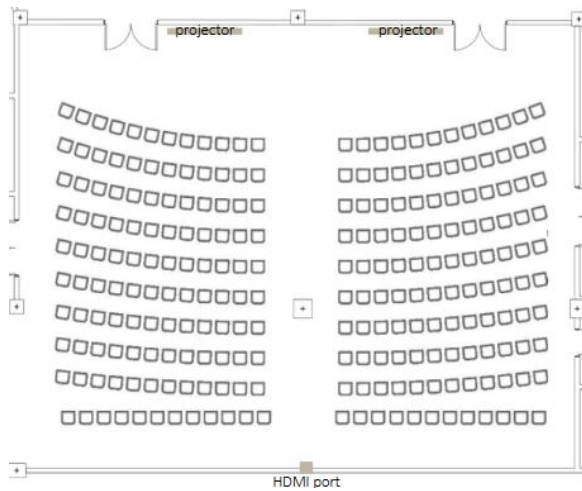
For a dancefloor space, remove 3-4 tables

Balcony: 5 tables | 60 pax

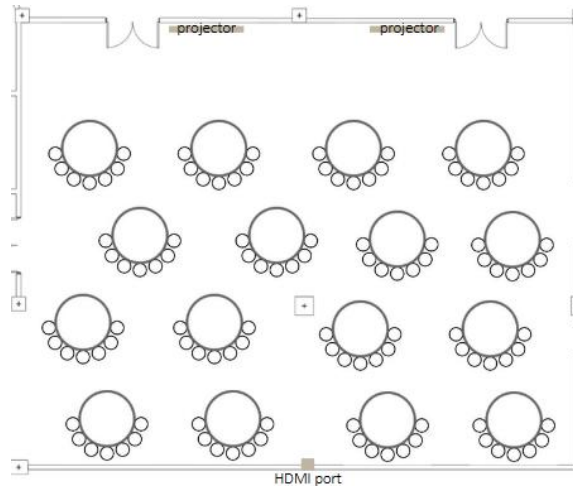
Up to 12 seats per table

WATERFRONT ROOM

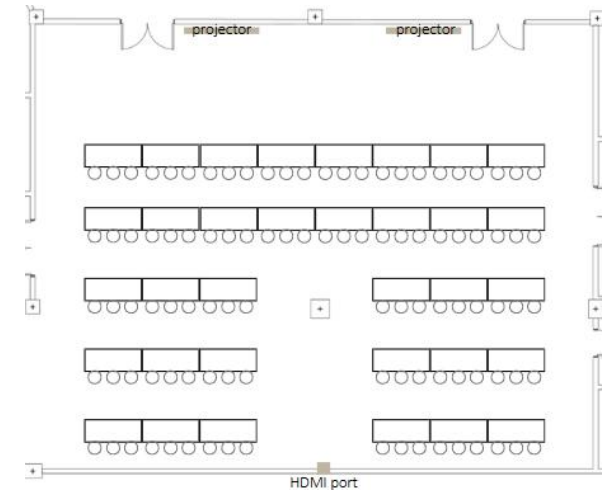
THE PROMENADE DOCKLANDS



THEATRE - 250 PAX



CABARET - 128 PAX
16 tables, 8 per table



CLASSROOM - 102 PAX
34 tables, 3 per table
*additional hire of long tables required



THE PROMENADE
ROCKETS



KEY FEATURES

- Exclusive use with private bar and bathrooms
- Dimmable lighting and hanging feature lanterns
- Undercover balcony with ceiling fairy lights
- Staircase and lift accessibility
- Welcoming entrance foyer
- In-house sound system & wireless microphone included
- Generous ceiling heights for a spacious feel
- Flexible layout options for seated or cocktail events
- Late-night licence until 3am

FAQS

Are there any noise restrictions?

Yes – we have a sound limit of 96dB, which your DJ will confirm is plenty loud for a great party atmosphere. If the bi-fold doors are open during your event, they will be closed at 10:00pm to assist with noise management. Balcony access remains available.

What AV is available?

All rooms include a built-in sound system and wireless microphone. In the Waterfront Room, there are also two drop-down projectors available for hire.

We also offer 85" screens and custom lighting options for hire. For a full overview, please refer to the venue's asset list.







CONTACT

Enquire about your next corporate, private or celebration event today with The Promenade Docklands.

E: events@thepromenadedocklands.com.au

W: www.thepromenadedocklands.com.au

A: Level 1, 78 Newquay Promenade Docklands VIC 3008

  @thepromenadedocklands

THE PROMENADE
DOCKLANDS

